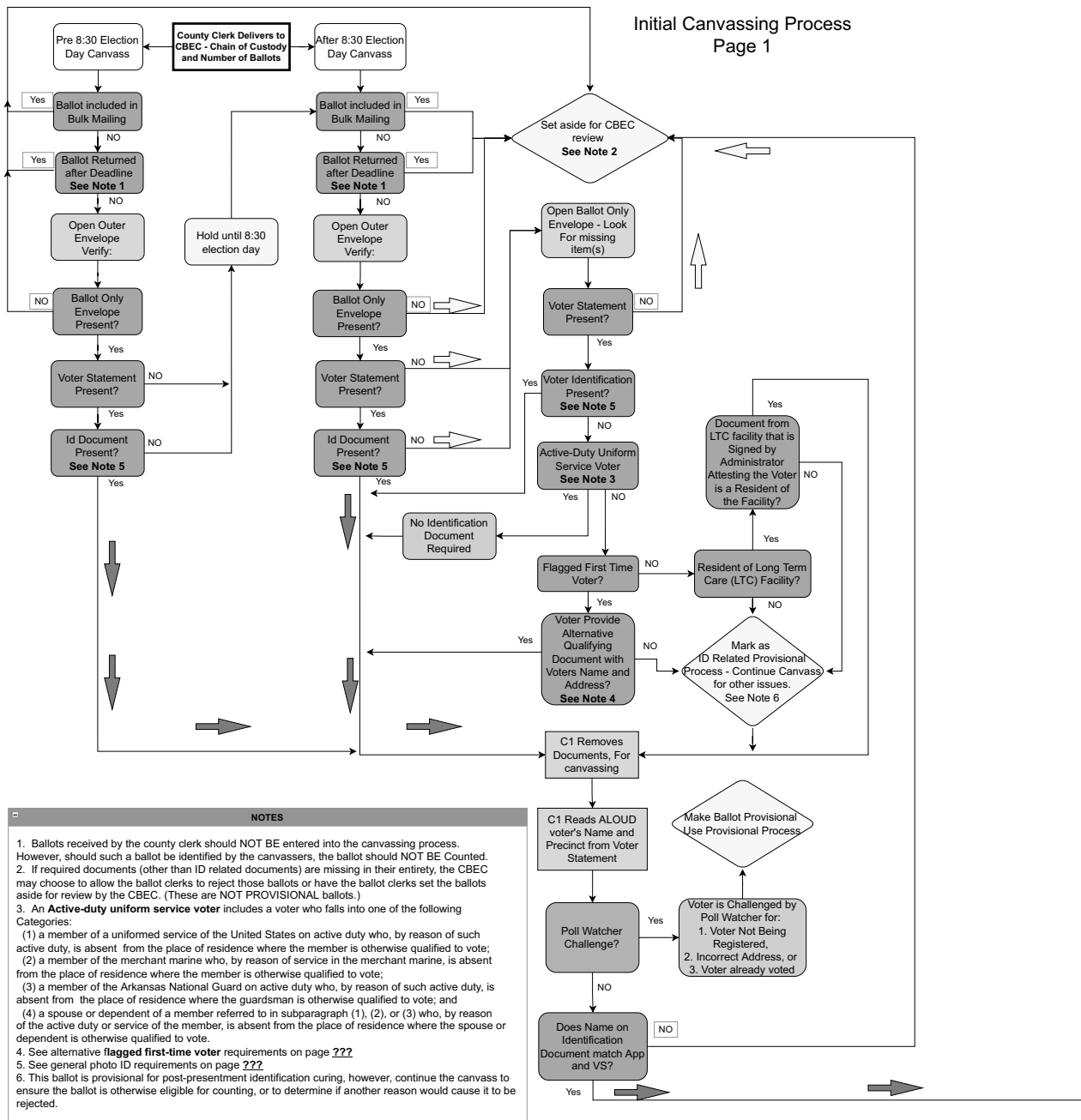
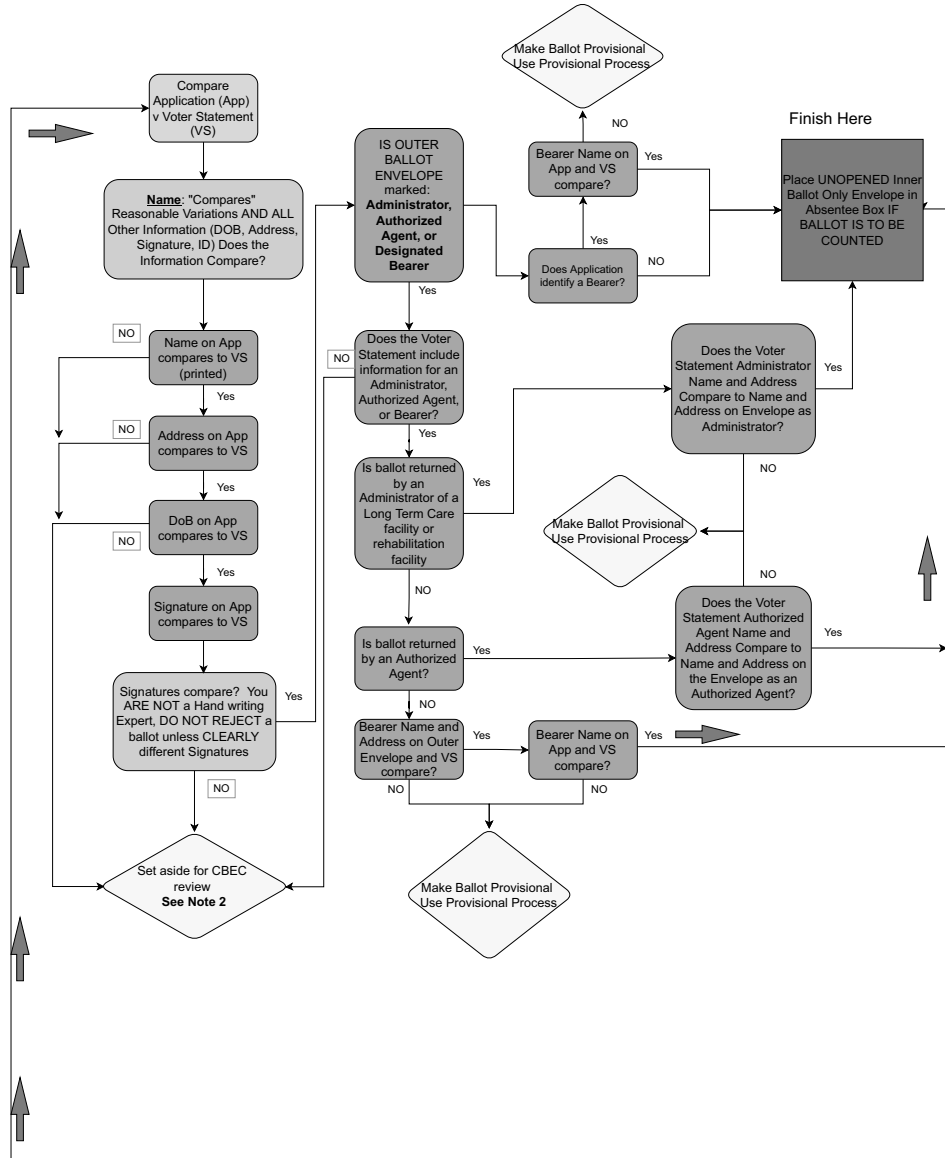


Initial Canvassing Process
Page 1

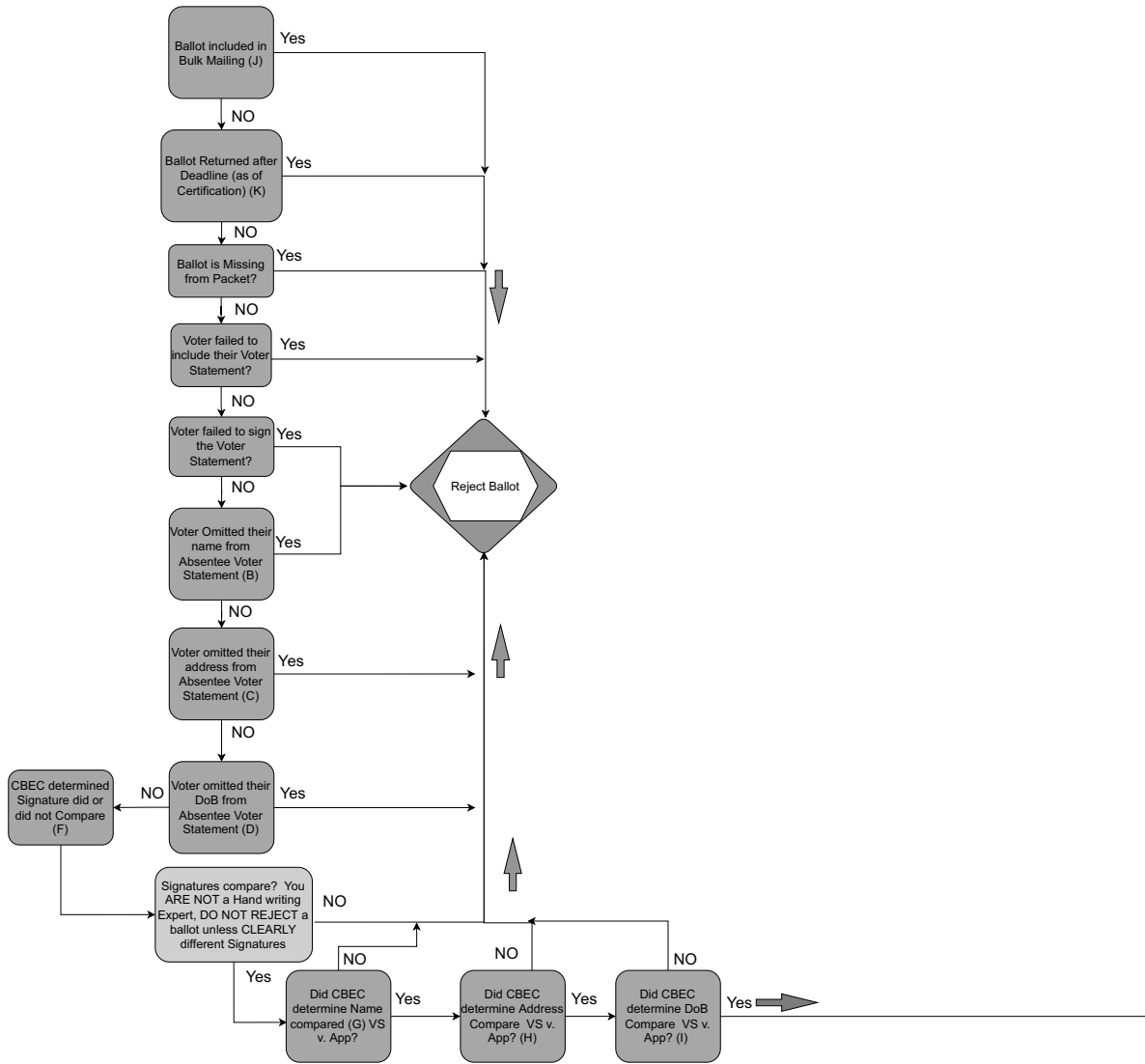


NOTES

- Ballots received by the county clerk should NOT BE entered into the canvassing process. However, should such a ballot be identified by the canvassers, the ballot should NOT BE Counted.
- If required documents (other than ID related documents) are missing in their entirety, the CBEC may choose to allow the ballot clerks to reject those ballots or have the ballot clerks set the ballots aside for review by the CBEC. (These are NOT PROVISIONAL ballots.)
- An **Active-duty uniform service voter** includes a voter who falls into one of the following Categories:
 - a member of a uniformed service of the United States on active duty who, by reason of such active duty, is absent from the place of residence where the member is otherwise qualified to vote;
 - a member of the merchant marine who, by reason of service in the merchant marine, is absent from the place of residence where the member is otherwise qualified to vote;
 - a member of the Arkansas National Guard on active duty who, by reason of such active duty, is absent from the place of residence where the guardsman is otherwise qualified to vote; and
 - a spouse or dependent of a member referred to in subparagraph (1), (2), or (3) who, by reason of the active duty or service of the member, is absent from the place of residence where the spouse or dependent is otherwise qualified to vote.
- See alternative **flagged first-time voter** requirements on page ???
- See general photo ID requirements on page ???
- This ballot is provisional for post-presentation identification curing, however, continue the canvass to ensure the ballot is otherwise eligible for counting, or to determine if another reason would cause it to be rejected.

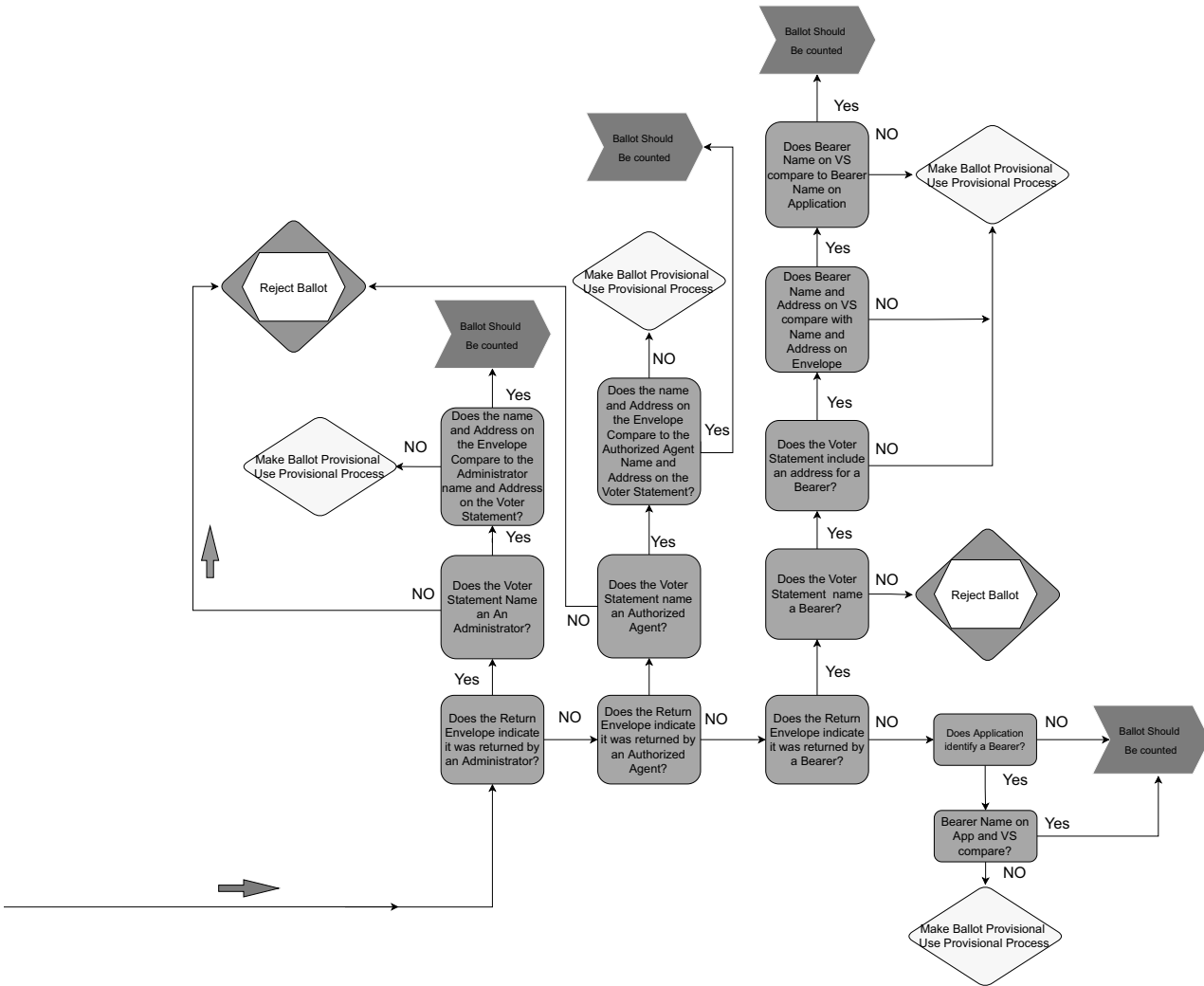


Optional Secondary Review for Ballots Rejected in Initial Canvassing Process
 (Does NOT Include ID related issues) Page 1



Optional Secondary Review for Ballots Rejected in Initial Canvassing Process
 (Does NOT Include ID related issues) Page 1

Optional Secondary Review for Ballots Rejected in Initial Canvassing Process
 (Does NOT Include ID related issues) Page 2



Optional Secondary Review for Ballots Rejected in Initial Canvassing Process
 (Does NOT Include ID related issues) Page 2